

January 2011

Progress Report: Industry Job Growth in U.S. Metros

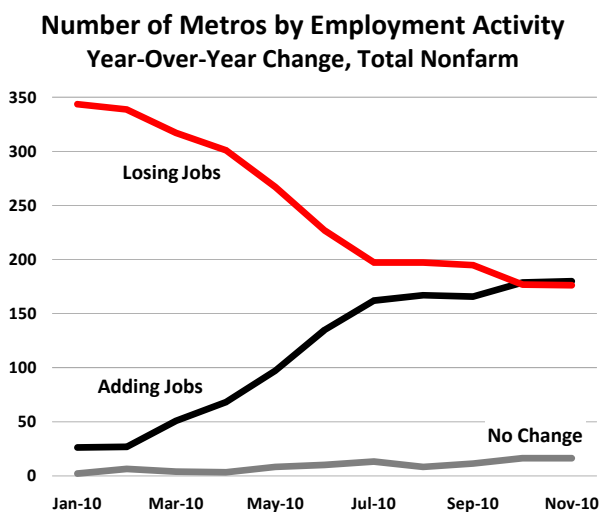
In this brief, we examine industry employment trends among the nation's 372 metro areas. We analyze year-over-year job growth to capture the latest developments, and look for clues to the post recession economy.



author:
Tom Tveidt, research economist
email tom@garnereconomics.com
web www.garnereconomics.com

Post Recession Industry Trends Emerge

As of November 2010, the number of U.S. metro areas adding jobs slightly exceeded the number losing jobs.¹ Metros adding jobs totaled 180, up just one from a month earlier, and outnumbering those losing jobs by only four (see chart below). The pace of metros switching from job losses to job gains has slowed decidedly since July and points to a slow recovery.



As metros add new workers we have the unique opportunity to look for emerging industry trends, offering a view into what tomorrow's post recession economy may become. Few expect our local economies to return to the same positions they held before the recession. Our examination of metro employment behavior (adding, losing, or no change in employment) among eleven major industry sectors² reveals several interesting developments (see charts page2):

- Metro employment activity has shifted mid-year dramatically in *Government*, going from mostly adding to mostly losing jobs. While the *Leisure & Hospitality* and *Professional & Business Services* sectors have gone from a majority of metros losing jobs to a majority adding jobs in 2010.

• Several sectors epitomize the lackluster pace of growth. *Retail Trade*, *Transportation & Utilities*, and *Wholesale Trade* are each experiencing little change between the numbers of metros adding and losing jobs each month.

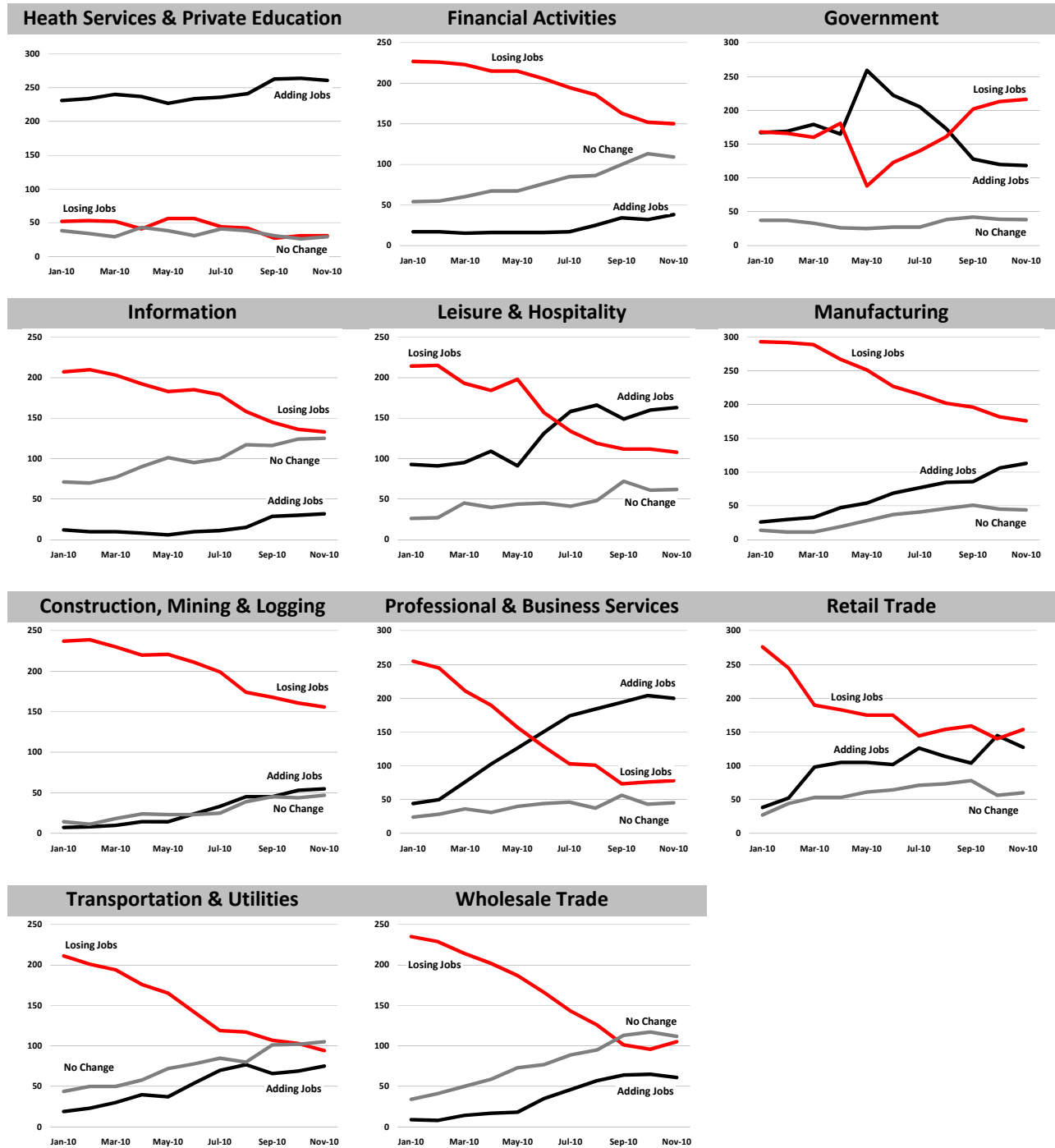
- New life in the *Manufacturing* sector can be seen with 106 metros adding jobs in November, versus just 33 in as recently as March.
- Individual metros are exhibiting their own unique post recession industry employment patterns. The top ranking metros by industry sector growth are presented on page 3, and one-year employment changes for all U.S metros beginning on page 5.

¹ We measure nonfarm employment growth relative to the same month one-year earlier to avoid seasonal variations. The data is published by the U.S. Bureau of Labor Statistics. November 2010 figures are considered preliminary.

² The U.S. Bureau of Labor Statistics aggregates related industry sectors into *supersectors*. We report on the largest eleven *supersectors* in order to capture broad trends and developments, but recognize that a more complete analysis would require these sectors to be disaggregated into smaller industry-specific groups.

Number of Metros by Change in Major Industry Sector Employment³

Source: U.S. Bureau of Labor Statistics, Year-Over-Year Employment (January-November 2010)



³ The U.S. Bureau of Labor Statistics does not publish current industry sector employment for all metro areas. Employment for some smaller sized metros and metro-level industry sectors are not published in the Bureau's monthly Current Employment Statistics (CES) series.

Top Ranked U.S. Metros by Major Industry Sector Growth One-Year Employment Change Percent & Number

Source: U.S. Bureau of Labor Statistics, November 2009- November 2010

Rank		Percent Increase	Rank		Number Increase (000's)
Health Services & Private Education					
1	Fairbanks, AK	10.9%	1	New York-N. New Jersey-Long Island, NY-NJ-PA	25.6
2	Palm Coast, FL	9.5%	2	Dallas-Fort Worth-Arlington, TX	16.1
3	Boise City-Nampa, ID	7.3%	3	Los Angeles-Long Beach-Santa Ana, CA	12.2
4	Lake Havasu City-Kingman, AZ	5.1%	4	Washington-Arlington-Alexandria, DC-VA-MD-WV	12
5	Ocala, FL	4.8%	5	Philadelphia-Camden-Wilmington, PA-NJ-DE-MD	10.5
Financial Activities					
1	Kokomo, IN	7.7%	1	New York-N. New Jersey-Long Island, NY-NJ-PA	3.3
2	Coeur d'Alene, ID	6.5%	2	Los Angeles-Long Beach-Santa Ana, CA	1.6
3	Elkhart-Goshen, IN	6.5%	3	Boston-Cambridge-Quincy, MA-NH NECTA	1.3
4	Leominster-Fitchburg-Gardner, MA NECTA	6.2%	4	Tampa-St. Petersburg-Clearwater, FL	0.8
5	Vineland-Millville-Bridgeton, NJ	5.9%	5	San Antonio-New Braunfels, TX	0.8
Government					
1	St. Joseph, MO-KS	12.0%	1	Washington-Arlington-Alexandria, DC-VA-MD-WV	10.9
2	Manhattan, KS	11.9%	2	Dallas-Fort Worth-Arlington, TX	7.5
3	Springfield, OH	8.5%	3	Austin-Round Rock-San Marcos, TX	3.8
4	Leominster-Fitchburg-Gardner, MA NECTA	8.2%	4	Durham-Chapel Hill, NC	3.5
5	Hot Springs, AR	8.0%	5	Honolulu, HI	3.3
Information					
1	Las Cruces, NM	12.5%	1	Los Angeles-Long Beach-Santa Ana, CA	16.2
2	Santa Fe, NM	11.1%	2	Seattle-Tacoma-Bellevue, WA	3.1
3	Bloomington-Normal, IL	11.1%	3	San Jose-Sunnyvale-Santa Clara, CA	1
4	Greenville, NC	11.1%	4	Madison, WI	0.7
5	Shreveport-Bossier City, LA	9.4%	5	Charlotte-Gastonia-Rock Hill, NC-SC	0.6
Leisure & Hospitality					
1	Glens Falls, NY	16.4%	1	Los Angeles-Long Beach-Santa Ana, CA	16.4
2	Rapid City, SD	9.3%	2	New York-N. New Jersey-Long Island, NY-NJ-PA	12.1
3	Austin-Round Rock-San Marcos, TX	8.9%	3	Orlando-Kissimmee-Sanford, FL	11.1
4	Pittsfield, MA NECTA	8.9%	4	Minneapolis-St. Paul-Bloomington, MN-WI	10.4
5	Charlottesville, VA	8.3%	5	Washington-Arlington-Alexandria, DC-VA-MD-WV	10.2
Manufacturing					
1	Youngstown-Warren-Boardman, OH-PA	21.1%	1	Cleveland-Elyria-Mentor, OH	7
2	Flint, MI	18.5%	2	Minneapolis-St. Paul-Bloomington, MN-WI	6.5
3	Fairbanks, AK	16.7%	3	Cincinnati-Middletown, OH-KY-IN	5.1
4	Madera-Chowchilla, CA	14.3%	4	Youngstown-Warren-Boardman, OH-PA	5
5	Lansing-East Lansing, MI	11.3%	5	San Jose-Sunnyvale-Santa Clara, CA	3.9
Construction, Mining & Logging					
1	Hanford-Corcoran, CA	33.3%	1	Greeley, CO	1.4
2	Lawton, OK	17.6%	2	Beaumont-Port Arthur, TX	0.9
3	Greeley, CO	16.1%	3	Columbus, OH	0.9
4	Rochester-Dover, NH-ME NECTA	7.1%	4	Buffalo-Niagara Falls, NY	0.8
5	Chattanooga, TN-GA	6.9%	5	El Paso, TX	0.7
Professional & Business Services					
1	Wichita Falls, TX	17.2%	1	Dallas-Fort Worth-Arlington, TX	23.7
2	Las Cruces, NM	16.7%	2	New York-N. New Jersey-Long Island, NY-NJ-PA	21.4
3	Steubenville-Weirton, OH-WV	16.7%	3	Washington-Arlington-Alexandria, DC-VA-MD-WV	18.5
4	Michigan City-La Porte, IN	11.5%	4	Phoenix-Mesa-Glendale, AZ	11.5
5	Fairbanks, AK	10.0%	5	Minneapolis-St. Paul-Bloomington, MN-WI	11.4

Rank		Percent Increase	Rank		Number Increase (000's)
Retail Trade					
1	Lawton, OK	9.1%	1	Washington-Arlington-Alexandria, DC-VA-MD-WV	13.4
2	Greenville-Mauldin-Easley, SC	7.1%	2	Phoenix-Mesa-Glendale, AZ	9.3
3	Washington-Arlington-Alex., DC-VA-MD-WV	5.2%	3	Miami-Fort Lauderdale-Pompano Beach, FL	4.7
4	Medford, OR	5.1%	4	Seattle-Tacoma-Bellevue, WA	3.9
5	Wenatchee-East Wenatchee, WA	5.0%	5	Virginia Beach-Norfolk-Newport News, VA-NC	3.2
Transportation & Utilities					
1	Hanford-Corcoran, CA	12.5%	1	Atlanta-Sandy Springs-Marietta, GA	2.9
2	Rapid City, SD	10.5%	2	Phoenix-Mesa-Glendale, AZ	2.2
3	Madera-Chowchilla, CA	10.0%	3	St. Louis, MO-IL	1.7
4	Coeur d'Alene, ID	10.0%	4	Washington-Arlington-Alexandria, DC-VA-MD-WV	1.5
5	Johnson City, TN	9.1%	5	Riverside-San Bernardino-Ontario, CA	1.4
Wholesale Trade					
1	Hanford-Corcoran, CA	20.0%	1	Miami-Fort Lauderdale-Pompano Beach, FL	3.3
2	Rochester-Dover, NH-ME NECTA	9.1%	2	Baltimore-Towson, MD	2.1
3	San Luis Obispo-Paso Robles, CA	8.7%	3	Phoenix-Mesa-Glendale, AZ	1.6
4	Coeur d'Alene, ID	7.1%	4	Philadelphia-Camden-Wilmington, PA-NJ-DE-MD	1.6
5	South Bend-Mishawaka, IN-MI	6.2%	5	Seattle-Tacoma-Bellevue, WA	1.4

All U.S. Metro Areas

One-Year Employment Change by Major Industry Sectors (in thousands)

Source: U.S. Bureau of Labor Statistics, November 2009- November 2010

(rows do not total due to rounding and incomplete sector reporting)

	Total Nonfarm	Health Services & Private Education	Financial Activities	Government	Information	Leisure & Hospitality	Manufacturing	Construction, Mining & Logging	Professional & Business Services	Retail Trade	Transportation & Utilities	Wholesale Trade
Abilene, TX	0.5	0.3	0	-0.2	0	0	0.1	0.2	0.1	0	0	-0.1
Aguadilla-Isabela-San Sebastian, PR	1.4	na	0.2	0.9	na	-0.2	-0.6	na	0	0	0	0
Akron, OH	0.4	0.6	-0.4	0.7	-0.2	-0.8	-0.3	-0.3	1.1	0.6	-0.2	-0.1
Albany, GA	0.3	na	0	-0.2	na	na	-0.3	na	0	0	0	0
Albany-Schenectady-Troy, NY	-3.1	1.2	0.1	-5.2	0.1	0.4	0.4	0.4	2.4	-3.1	-0.1	-0.3
Albuquerque, NM	-6.7	1	-0.5	0.6	-0.1	-0.5	-0.1	-3.1	-3.8	-0.8	0.1	0.5
Alexandria, LA	0.6	na	0	-0.7	na	na	na	na	0	0.1	0	0
Allentown-Bethlehem-Easton, PA-NJ	1.7	1.8	-0.4	-1.1	0.1	1.4	0.2	0.3	0.7	-1.5	0.4	0.2
Altoona, PA	1.2	0.4	0	0.1	na	-0.1	0.1	na	0.1	0	0	0
Amarillo, TX	2	0.7	0	0.2	-0.1	0.1	0.2	0.4	0.4	0	0	0
Ames, IA	0.2	na	0	-0.1	na	na	na	na	0	na	na	0
Anchorage, AK	0.4	0.7	0.1	-0.2	0	0.3	0.1	na	0.2	0.2	-0.3	-0.3
Anderson, IN	-1	-0.1	0	-0.8	-0.1	0	0	-0.1	0.2	-0.1	na	0
Anderson, SC	-0.2	na	0	-0.2	na	na	-0.1	na	0	-0.1	na	0
Ann Arbor, MI	-0.5	-0.1	0	0.3	-0.1	-0.6	-0.7	-0.2	1.3	-0.4	0	0
Anniston-Oxford, AL	-0.2	0	-0.1	0	0	0	-0.1	0	0	0.1	0	-0.1
Appleton, WI	0.8	0.2	0	0.4	0	0.2	0.1	-0.2	0.2	-0.1	0	0.1
Asheville, NC	1.7	0.7	0.1	0.9	0.1	1.1	-0.5	-0.4	-0.3	0.1	-0.1	0
Athens-Clarke County, GA	-0.8	na	0	-0.3	na	-0.2	na	na	0.5	0	na	0
Atlanta-Sandy Springs-Marietta, GA	2.3	10.2	-6.5	-7.1	-2.2	1.3	1	na	8.6	0.1	2.9	0.9
Atlantic City-Hammonton, NJ	-1.7	0.7	0	-0.2	0	-1.8	-0.1	-0.1	0.1	-0.1	0	0
Auburn-Opelika, AL	0.1	-0.1	0	0	0	0.1	0	-0.1	0	0	0	0
Augusta-Richmond County, GA-SC	1.8	0.5	-0.3	-0.5	0	0.1	-0.3	-0.7	2.4	-0.2	0.2	0.1
Austin-Round Rock-San Marcos, TX	17	3.1	0.1	3.8	-0.8	7.5	0.5	-0.2	2.2	-0.6	0.1	-0.2
Bakersfield-Delano, CA	-2.6	0.3	-0.3	-0.8	-0.1	0	0	na	-0.4	-0.6	0.4	-0.5
Baltimore-Towson, MD	17.7	6.3	-3	3.2	-0.3	8.7	-3	-0.6	8.4	-0.7	-0.2	2.1
Bangor, ME NECTA	-0.1	-0.1	0	0	0	0	-0.2	na	0.3	-0.1	-0.1	0
Barnstable Town, MA NECTA	-0.1	0.3	-0.1	0.7	-0.1	0	-0.1	-0.2	-0.3	0.2	na	0
Baton Rouge, LA	-0.9	0.9	-0.5	-2.4	0.3	0.9	-0.5	na	0.4	0.7	0	-0.4
Battle Creek, MI	-0.8	-0.2	0	-0.2	na	-0.1	-0.3	0	-0.1	0	na	0
Bay City, MI	-0.5	0.1	0	-0.4	0	-0.1	0	0	0	-0.1	na	0
Beaumont-Port Arthur, TX	2.3	0.5	0	-0.3	-0.1	0	0.5	0.9	0.4	0.2	0	0
Bellingham, WA	-0.4	na	0	-0.5	na	0.1	-0.2	-0.2	0.1	0.4	na	0
Bend, OR	-1.8	0.1	-0.2	0	0	-0.4	-0.1	-0.8	-0.3	0	-0.1	0
Billings, MT	-2.1	0.3	0	-0.4	na	0	na	na	-0.1	na	na	0
Binghamton, NY	0.5	0.3	0	-0.2	0	0	0	0	0.3	0.3	-0.1	0
Birmingham-Hoover, AL	-2.9	-0.3	-0.3	0.1	-0.5	0.5	-0.8	na	-0.8	-0.1	0	-0.6
Bismarck, ND	0.2	0.2	0	0.2	0	0.1	-0.5	0.1	0.1	0	0	0
Blacksburg-Christiansburg-Radford, VA	1.2	na	0	0.4	na	na	na	na	0	na	na	0
Bloomington, IN	-0.8	0.1	0	-0.5	0	-0.4	0.1	-0.2	0.3	-0.1	0	0
Bloomington-Normal, IL	0	0	0	-0.1	0.1	-0.2	0.1	0.1	0	0	0.1	0

	Total Nonfarm	Health Services & Private Education	Financial Activities	Government	Information	Leisure & Hospitality	Manufacturing	Construction, Mining & Logging	Professional & Business Services	Retail Trade	Transportation & Utilities	Wholesale Trade
Boise City-Nampa, ID	-5.9	2.7	0.2	-2.5	-0.1	-0.7	-0.2	-2	-2.9	-1	0	0.3
Boston-Cambridge-Quincy, MA-NH NECTA	26.5	9.2	1.3	1.1	-0.3	7.4	1.1	na	6.4	2.6	-1	-0.9
Boulder, CO	-0.4	0	-0.2	0	0.1	0.4	-0.1	-0.4	0.4	-0.7	0	0.1
Bowling Green, KY	1	0.2	0	0.1	na	0.1	0.2	0	0	0.1	na	0
Bremerton-Silverdale, WA	-0.1	na	0	-0.3	na	0.1	0	0	0.1	0.4	na	0
Bridgeport-Stamford-Norwalk, CT NECTA	0.1	0.6	-1.3	2.5	-0.1	0.7	-1.5	-0.7	0.8	-0.6	-0.1	-0.2
Brownsville-Harlingen, TX	2.8	1	0	0.9	-0.1	0.1	0	0.2	0.2	0.3	0.1	0
Brunswick, GA	-1.1	na	0	-0.6	na	na	na	na	0	-0.1	na	0
Buffalo-Niagara Falls, NY	1.6	-0.2	-0.3	-1.1	-0.1	1.9	-1.7	0.8	2.9	0.1	-0.4	-0.8
Burlington, NC	0	0.3	0	0.1	0	0	-0.2	-0.2	0.2	0	0	-0.1
Burlington-South Burlington, VT NECTA	-0.3	0.3	-0.1	0	-0.1	0.1	-0.3	0	0	0	0	-0.1
Canton-Massillon, OH	-0.4	0.2	-0.3	0	-0.1	0.1	0.2	-0.1	0.2	-0.3	0	-0.1
Cape Coral-Fort Myers, FL	-0.3	0.9	-0.3	-0.3	-0.2	0.3	-0.2	-0.8	-0.2	0.1	0	0.2
Cape Girardeau-Jackson, MO-IL	-0.7	na	0	0.1	na	na	na	na	0	na	na	0
Carson City, NV	-0.6	na	0	0.1	na	-0.2	-0.1	na	0.1	0	na	0
Casper, WY	0.2	0.2	0	0	0	-0.2	0.1	na	0	-0.2	0	0
Cedar Rapids, IA	-0.4	0	0	-0.3	-0.2	0	-0.3	0.5	0.1	-0.3	0	-0.1
Champaign-Urbana, IL	0	0.3	0	-0.7	0.2	0	0	0.1	0	0.1	0.1	-0.1
Charleston, WV	0.2	0.1	-0.1	-0.1	0	-0.2	-0.1	0	1.1	-0.1	-0.2	-0.2
Charleston-North Charleston-Summerville, SC	3.4	0.8	0.2	1	0	-1.7	0.9	-0.5	0.9	1.3	-0.2	0.3
Charlotte-Gastonia-Rock Hill, NC-SC	1.5	0.3	0.7	0.7	0.6	-0.4	1.5	-5	5.7	-0.5	-1.3	-1.2
Charlottesville, VA	1.3	na	0	-0.1	na	0.9	na	na	0.4	na	na	0
Chattanooga, TN-GA	3.2	0.9	-0.2	0.2	0	0.9	-0.2	0.6	0.9	0.7	-0.2	-0.1
Cheyenne, WY	-0.6	0	0	0.1	0	-0.2	-0.1	-0.3	0.1	-0.2	0	0
Chicago-Joliet-Naperville, IL-IN-WI	-52.1	5	-3	-5	-0.2	-9.1	2	na	-14.8	-3.8	-0.5	-1
Chico, CA	-0.9	0.1	-0.1	0.1	-0.1	-0.1	-0.3	-0.6	0	0.2	0	0
Cincinnati-Middletown, OH-KY-IN	0.1	3.3	-1.9	-1.2	-0.4	0.5	5.1	-1.2	0.1	-1.7	0.3	-1.7
Clarksville, TN-KY	1.5	0.3	0	0.5	0	0.2	0.2	0.1	0	0.2	0	0
Cleveland, TN	0.2	0.2	-0.1	-0.1	0	0.1	0.1	0	0.1	0	0	0
Cleveland-Elyria-Mentor, OH	12	4.4	-2.8	-2.6	-0.8	3.8	7	-2.8	5	1.7	-0.3	0.8
Coeur d'Alene, ID	0	0.3	0.2	-0.1	0	-0.3	0.2	na	0	-0.1	0.1	0.1
College Station-Bryan, TX	1.7	0.4	0.1	0.2	-0.1	0.2	0.1	0.4	0.1	0.1	0	0
Colorado Springs, CO	-2.1	0.7	-0.3	-0.5	0.1	0.6	-0.4	-1.1	-0.4	-0.4	0	-0.2
Columbia, MO	-0.3	na	0	0.5	na	na	na	na	0	0.1	na	0
Columbia, SC	0.2	0.4	-0.1	0.3	0.1	-0.1	-0.1	-0.7	0.4	0	-0.1	-0.3
Columbus, GA-AL	0.4	na	-0.2	-0.2	-0.1	0.1	na	na	0.5	-0.4	na	0
Columbus, IN	-0.1	0.1	-0.1	-0.5	0	0	0.1	-0.1	0.3	-0.1	na	0
Columbus, OH	-8	0	-5.7	0.5	-0.8	-0.2	-1.7	0.9	2.1	-0.9	-2.3	1
Corpus Christi, TX	2.7	0.8	-0.1	0.4	0	-0.2	0.2	0.7	0.4	0.1	0.2	0
Corvallis, OR	-0.2	0.1	0	0.4	0	-0.1	-0.2	-0.1	-0.1	na	na	0
Crestview-Fort Walton Beach-Destin, FL	-0.3	0.1	0	0	-0.1	0	-0.1	0	-0.1	0	0	-0.1
Cumberland, MD-WV	-1.1	na	na	-0.5	na	na	na	na	0	na	na	0
Dallas-Fort Worth-Arlington, TX	40.6	16.1	-1.3	7.5	-5.3	-0.4	2.7	-0.3	23.7	-0.5	0.2	-2.8
Dalton, GA	-1.7	na	na	0.2	na	na	-0.6	na	0.1	-0.1	0	0
Danbury, CT NECTA	1.9	na	na	0.7	na	-0.2	na	na	0.1	0.3	na	0
Danville, IL	-0.2	0	0	-0.3	0	0	0	0	0.1	0	0.1	0
Danville, VA	0	na	na	0.3	na	na	-0.2	na	0	na	na	0

	Total Nonfarm	Health Services & Private Education	Financial Activities	Government	Information	Leisure & Hospitality	Manufacturing	Construction, Mining & Logging	Professional & Business Services	Retail Trade	Transportation & Utilities	Wholesale Trade
Davenport-Moline-Rock Island, IA-IL	1.7	0.4	0	0	0	-0.2	0.4	0.2	0.7	-0.2	0	0.1
Dayton, OH	-3	-0.2	-0.6	-1.6	-0.3	0.8	-0.1	-0.4	0.7	-0.2	-0.2	-0.3
Decatur, AL	-0.3	0	0	-0.1	0	0	0	-0.2	0	0	0	0
Decatur, IL	-0.6	0	0	0.1	0	-0.3	0	-0.3	0.1	0	-0.1	0
Deltona-Daytona Beach-Ormond Beach, FL	-0.4	1.1	-0.1	-0.9	-0.1	0.7	-0.3	-0.6	0.1	-0.6	0	0
Denver-Aurora-Broomfield, CO	2.2	5	-1.7	-0.6	-0.9	1.6	-2.6	-2.9	4.4	0	-1.2	0.9
Des Moines-West Des Moines, IA	-1.4	0.7	0.3	-0.5	-0.4	-0.5	-0.2	0.3	0.3	-0.3	-0.2	-1.6
Detroit-Warren-Livonia, MI	-27.7	1	-3.4	-7.4	-1.6	-4.5	2.6	-2.4	-3.6	-5.5	-2	-1.3
Dothan, AL	-0.6	0	-0.1	0	-0.1	0.1	-0.1	-0.1	-0.1	0	-0.1	-0.1
Dover, DE	0.1	0.4	-0.1	-0.3	0	0.4	-0.1	-0.1	-0.2	-0.1	na	0
Dubuque, IA	0.7	na	na	0	na	na	na	na	0	-0.2	na	0
Duluth, MN-WI	1.1	0.7	0	0.1	0.1	0	0.2	0	0.3	-0.2	0.2	-0.1
Durham-Chapel Hill, NC	2.3	0.4	-0.4	3.5	0	0.1	-0.1	-0.5	-0.3	-0.2	-0.1	0.1
Eau Claire, WI	0	0.2	0	-0.7	0	0.2	0.2	0	0.3	-0.1	-0.1	0
El Centro, CA	-0.5	0	0	-0.3	0	0.1	-0.1	-0.2	0.1	-0.1	0.1	-0.1
El Paso, TX	1	1	0.1	-2.1	-0.4	0.4	-0.1	0.7	1.2	0.3	0	-0.1
Elizabethtown, KY	1.1	0.1	na	0.9	na	0	0	-0.1	0.1	0	na	0
Elkhart-Goshen, IN	0.5	0	0.2	-0.2	0	0.1	0.4	-0.2	0.2	0	0.1	0.2
Elmira, NY	0.6	0	0	-0.1	0	0.1	0.3	0.1	0.1	0.1	0	0
Erie, PA	1.8	0.7	0	0.1	0	0.4	-0.2	-0.1	0.5	0.2	0.1	0.1
Eugene-Springfield, OR	-0.3	0.2	-0.2	-0.1	0	0	-0.1	na	0.1	0	0	0.1
Evansville, IN-KY	-0.6	0.7	0	-0.9	-0.1	0.1	-0.8	-0.6	1.2	-0.1	0	0.2
Fairbanks, AK	0.5	0.5	0	0.1	0	0	0.1	na	0.2	-0.2	0	0
Fajardo, PR	-0.3	na	na	-1	na	0	na	na	0	0	na	0
Fargo, ND-MN	0	0	-0.1	0.7	0	-0.2	-0.2	-0.3	0	-0.1	0.1	0.1
Farmington, NM	-0.2	na	na	-0.1	na	na	na	na	0	na	na	0
Fayetteville, NC	-0.9	0.4	0	-1.6	0.1	0	-0.1	-0.2	0.5	0.2	-0.1	0
Fayetteville-Springdale-Rogers, AR-MO	-2.6	0.3	0	-1.3	-0.1	0.1	-1.1	-0.6	0.6	-0.4	-0.3	0.1
Flagstaff, AZ	1.5	0.3	0	0.4	-0.1	0.7	0.2	-0.4	-0.1	na	na	0
Flint, MI	-0.5	-0.2	-0.2	-1	-0.4	0.1	1.5	-0.1	-0.5	0.4	0	0
Florence, SC	1.6	na	na	0.3	na	na	na	na	0	na	na	0
Florence-Muscle Shoals, AL	0	0.1	0	0.1	0	0	0	-0.1	-0.1	0.1	0	-0.1
Fond du Lac, WI	0.6	0.1	-0.1	0	0	0.1	0.3	0	0.1	0.1	0	0
Fort Collins-Loveland, CO	0.9	0.7	0	0.2	0	0.1	0	-0.6	0.5	0	0	0
Fort Smith, AR-OK	-1.2	0.1	0	0.4	-0.1	-0.3	-0.3	-0.1	-0.3	-0.3	-0.3	0
Fort Wayne, IN	-1.3	0.6	0.1	-1.1	-0.1	-0.1	-1.8	-0.5	1.7	-0.2	0.2	0.2
Fresno, CA	-2.2	0.7	0	-2.2	-0.1	-0.2	-0.2	na	0.3	-0.2	0.3	-0.1
Gadsden, AL	0.1	0.2	0	-0.1	0	0	0	0	-0.1	0	0.1	0
Gainesville, FL	0.9	0.6	-0.1	0	-0.1	0.1	-0.1	0	0.2	0.1	0.1	-0.1
Gainesville, GA	-0.7	na	na	-0.1	na	na	na	na	0	-0.1	na	0
Glens Falls, NY	0.8	0.3	-0.1	-1	0	0.9	0.2	0.1	0.2	0.2	-0.1	0
Goldsboro, NC	0	na	na	0	na	na	na	na	0	na	na	0
Grand Forks, ND-MN	0.5	0.1	0	0.1	0	0	0.1	0.1	0	0	0.1	0
Grand Junction, CO	-1.2	-0.1	-0.2	-0.1	0	-0.2	0	-0.5	-0.1	-0.1	0.1	0
Grand Rapids-Wyoming, MI	0.8	1.2	-0.1	0.1	-0.3	0.1	-1.4	-0.7	2.2	-0.2	-0.1	-0.2
Great Falls, MT	-1.3	0	na	-0.7	na	-0.1	na	na	0	na	na	0
Greeley, CO	1.5	0.2	-0.1	-0.1	-0.1	-0.2	0.1	1.4	0.2	0	0.1	0

	Total Nonfarm	Health Services & Private Education	Financial Activities	Government	Information	Leisure & Hospitality	Manufacturing	Construction, Mining & Logging	Professional & Business Services	Retail Trade	Transportation & Utilities	Wholesale Trade
Green Bay, WI	1.7	0.5	-0.2	1.1	-0.1	0.3	0.2	0	0	-0.2	0.2	-0.1
Greensboro-High Point, NC	-3.1	-0.8	0.1	0.8	0	-1.6	-1.6	-0.9	1.5	0	-0.6	0.2
Greenville, NC	-1.1	0.2	0	-1.3	0.1	0	-0.1	-0.1	0.2	0.1	-0.1	0
Greenville-Mauldin-Easley, SC	1.4	0.9	0.1	0	0	0.9	0.1	-0.3	-2.5	2.3	-0.3	0.1
Guayama, PR	-2.2	na	na	-0.6	na	na	-0.9	na	0	-0.2	na	0
Gulfport-Biloxi, MS	-0.8	na	na	-0.4	na	0.2	-0.2	-0.2	0	-0.2	na	0
Hagerstown-Martinsburg, MD-WV	-0.5	0.1	0	0.2	-0.1	0.2	-0.6	0.1	0.3	-0.5	na	0
Hanford-Corcoran, CA	-0.8	0.2	0	-0.5	-0.1	0	-0.7	0.3	0	-0.2	0.1	0.1
Harrisburg-Carlisle, PA	-2.3	1	-0.3	-0.7	0	0.5	-0.4	-2.3	0.7	-1	0.2	0.1
Harrisonburg, VA	1.9	na	na	-0.1	na	na	na	na	0	-0.1	na	0
Hartford-West Hartford-East Hartford, CT NECTA	-2	4.5	-2.6	0.1	-0.2	-0.5	0.7	-2.6	-0.2	0.5	-1.1	-0.2
Hattiesburg, MS	1.9	na	na	-0.3	na	0.2	-0.1	na	0	-0.2	na	0
Hickory-Lenoir-Morganton, NC	-2.6	0.2	0	-0.4	0	-0.6	-1.5	-0.1	0.2	-0.1	-0.1	-0.1
Hinesville-Fort Stewart, GA	0.3	na	na	0.2	na	na	na	na	0	na	na	0
Holland-Grand Haven, MI	-3.5	0.2	0	-2.3	0	-0.1	-1.2	-0.4	0.1	0	na	0
Honolulu, HI	5.5	0.2	-0.5	3.3	-0.6	2.8	0.7	0.6	-1.4	0.8	0.1	-0.5
Hot Springs, AR	0.9	na	na	0.4	na	na	na	na	0	na	na	0
Houma-Bayou Cane-Thibodaux, LA	-0.4	na	na	-0.5	na	0.1	na	na	0	0.1	na	0
Houston-Sugar Land-Baytown, TX	9.5	8.8	-1	-1.1	-1.6	4	2.7	na	-2.9	-0.5	0.6	-1
Huntington-Ashland, WV-KY-OH	0.2	-0.1	na	0.1	na	0	0	na	-0.1	-0.2	na	0
Huntsville, AL	1.4	0.3	0	2.5	0	0.4	-0.6	-0.1	-1.5	0.5	0	-0.1
Idaho Falls, ID	-0.8	0.3	0	-0.2	-0.1	-0.1	0.1	-0.4	-0.2	-0.2	0	-0.1
Indianapolis-Carmel, IN	5.3	0.8	0.3	-0.5	0	-0.9	-0.3	na	10.6	0.9	-0.4	-0.1
Iowa City, IA	-0.8	na	na	-0.8	na	0.1	na	na	0.2	-0.4	na	0
Ithaca, NY	0.5	0.4	0	-0.1	0	0.1	0.1	0	0.1	0	-0.1	0
Jackson, MI	-0.5	0.1	0	-0.1	0	-0.2	-0.1	-0.1	0	0	na	0
Jackson, MS	1.5	1.6	-0.1	-0.3	-0.2	0	-0.6	na	0.4	-0.4	0.3	0
Jackson, TN	0.2	0	0	0	-0.1	0	-0.1	0	0.1	0.1	0	0.1
Jacksonville, FL	-1.6	2.6	-0.9	-1.1	-0.2	0.6	-1	na	-1	-1.1	0.6	-0.2
Jacksonville, NC	-0.5	na	na	-0.1	na	na	na	na	0	na	na	0
Janesville, WI	0.2	0.1	0	-0.1	0	0.1	0.2	0	0	-0.1	0	0
Jefferson City, MO	0.2	na	na	-0.2	na	na	na	na	0	0.2	na	0
Johnson City, TN	0.9	0.3	-0.1	0	0	0.2	-0.3	0	0.5	0.1	0.1	0
Johnstown, PA	0	0.5	na	-0.7	na	0	0	na	0.1	-0.3	na	0
Jonesboro, AR	0	na	na	0.2	na	na	na	na	0	na	na	0
Joplin, MO	0.8	0.1	na	0.2	na	na	-0.2	na	0	-0.1	na	0
Kalamazoo-Portage, MI	-1.6	0.2	-0.1	-0.4	0	0	-0.8	-0.4	-0.2	-0.1	0.1	0
Kankakee-Bradley, IL	-0.3	0	0	0.1	0	-0.2	0	0	-0.1	0	0	-0.1
Kansas City, MO-KS Metropolitan Statistical Area	-19.8	0.6	-2.8	-7.2	-2.4	-2	-2.7	-1.6	-0.6	-1.1	0.9	-0.3
Kennewick-Pasco-Richland, WA	4.8	0.3	-0.1	0.3	na	0.6	0	0	1	0.5	na	0
Killeen-Temple-Fort Hood, TX	2.1	0.6	0	1.1	-0.1	0.2	0.1	0.1	0.1	0.1	-0.2	0
Kingsport-Bristol-Bristol, TN-VA	1.2	0.5	-0.1	0.3	0	0.1	-0.1	-0.1	0	0.6	-0.1	0.1
Kingston, NY	0.6	0.2	0	-0.1	0	0.1	-0.1	0.1	0.3	-0.2	0.1	0
Knoxville, TN	1.7	0.6	0	-0.7	-0.1	0.7	-0.7	-0.1	1.4	0.4	0.1	0
Kokomo, IN	1.2	na	0.1	0	0	0	0.5	0	0	0	0	0
La Crosse, WI-MN	-0.1	-0.2	-0.1	-0.2	0	0.2	0.2	-0.1	0.1	-0.1	0	0
Lafayette, IN	-0.2	0.2	0	-0.8	0	-0.1	0.2	-0.2	0.5	0	0	0.1

	Total Nonfarm	Health Services & Private Education	Financial Activities	Government	Information	Leisure & Hospitality	Manufacturing	Construction, Mining & Logging	Professional & Business Services	Retail Trade	Transportation & Utilities	Wholesale Trade
Lafayette, LA	2.3	0.7	0.1	0.7	0	0.1	0	na	0.2	0.2	0.2	-0.1
Lake Charles, LA	1.4	na	na	-0.4	na	0.3	-0.2	na	0.1	0.1	na	0
Lake Havasu City-Kingman, AZ	0.1	0.4	0	0	0	-0.1	0	-0.2	0	na	na	0
Lakeland-Winter Haven, FL	-0.8	0.5	-0.1	-0.2	-0.1	0.2	-0.5	-0.7	0	-0.5	0.2	0
Lancaster, PA	1.4	1	-0.1	0	0.1	0.5	-0.7	0.1	-0.1	0.7	-0.3	0.3
Lansing-East Lansing, MI	-1.3	0.9	-0.4	-2.3	0	-0.9	1.8	-0.3	0.6	-0.6	0.1	0
Laredo, TX	1.6	0.6	0.1	0.1	0	0.2	0	0.2	0.3	0	0	0
Las Cruces, NM	1.5	0.3	-0.1	0.2	0.1	0	-0.1	0	1.1	0.1	0	0
Las Vegas-Paradise, NV	-21.3	-0.4	-2.1	-2.9	-0.3	-1.4	-0.7	na	-0.1	-0.4	-0.7	-0.3
Lawrence, KS	0	-0.1	na	0	na	0	na	na	0.2	-0.1	na	0
Lawton, OK	1.2	0.1	0	0	-0.1	0.2	0.1	0.3	0.2	0.5	0	-0.1
Lebanon, PA	0.4	0.1	na	0.1	na	na	-0.2	na	0	0.1	na	0
Leominster-Fitchburg-Gardner, MA NECTA	0.1	0	0.1	0.7	0	0.2	-0.5	-0.3	0	-0.1	na	0
Lewiston, ID-WA	-0.4	0.2	0	-0.2	-0.1	-0.1	0.1	na	0	-0.1	0	0
Lewiston-Auburn, ME NECTA	0.5	0.3	0.1	-0.1	-0.1	-0.1	-0.3	0	0.3	0.3	0	0
Lexington-Fayette, KY	-5	0.3	0.1	-1.2	-0.2	-0.1	-0.3	-0.5	-3.3	0.3	-0.1	0
Lima, OH	0	0	na	0	na	0.1	0.1	0	0	0.1	na	0.1
Lincoln, NE	0.5	0.6	0.3	-0.4	-0.2	0.1	-0.2	-0.2	0.3	0.1	0.1	-0.1
Little Rock-North Little Rock-Conway, AR	-6.4	-0.1	-0.1	-1	-0.4	-0.4	-1	-0.4	-2.1	-0.5	-0.7	0.2
Logan, UT-ID	0.6	0	0	0.3	0	0.1	0.4	-0.1	0.1	-0.1	0	-0.1
Longview, TX	2	0.4	0	0.2	0	0	0.2	0.4	0.4	0.2	0.1	0
Longview, WA	-0.7	0.1	na	0	na	0.1	-0.1	-0.1	0	0.2	na	0
Los Angeles-Long Beach-Santa Ana, CA	4.2	12.2	1.6	-19.4	16.2	16.4	-7	na	7	-1	-0.5	-5.2
Louisville-Jefferson County, KY-IN	-10.4	1.3	-0.9	-2.5	0	2.2	-3.4	-2.3	-0.3	-1	-1.6	-0.5
Lubbock, TX	0.4	0.5	0.1	-0.9	-0.3	0.3	0.1	0.2	0.3	0	0	0
Lynchburg, VA	-3.5	na	na	-0.6	na	na	-0.2	na	0	0	na	na
Macon, GA	-1.5	0.4	0	-0.2	na	0	na	na	0.2	-0.1	0	na
Madera-Chowchilla, CA	0.3	0	0	-0.2	0	0.1	0.4	-0.1	0	0	0.1	0
Madison, WI	-1.5	1.2	-0.6	-0.8	0.7	0.5	0.5	-0.7	-1.8	-0.4	0	-0.2
Manchester, NH NECTA	0.8	0.5	-0.2	0.4	0	0.1	-0.2	-0.2	-0.1	0.3	na	0.1
Manhattan, KS	3.1	na	na	2.4	na	na	na	na	0	na	na	na
Mankato-North Mankato, MN	0.5	na	na	-0.1	na	na	na	na	0	na	na	na
Mansfield, OH	0.9	0.2	-0.2	-0.1	na	-0.1	0	0	0.2	0.1	na	na
Mayaguez, PR	0.4	-0.8	-0.8	0.2	0	0	0	na	2.7	-0.2	0	na
McAllen-Edinburg-Mission, TX	5.4	2.3	-0.2	1.8	-0.1	0.5	0.2	0	0.5	0.2	0	0
Medford, OR	0.7	0.2	-0.1	0.2	0	-0.1	-0.1	na	0.1	0.7	0	0
Memphis, TN-MS-AR	-8	0.7	-0.4	1.6	-0.3	-2.6	-2.2	-0.8	-0.4	-1.4	-1.4	0
Merced, CA	-0.7	-0.1	0	0.1	0	0.1	-0.6	0	-0.2	-0.1	0	0
Miami-Fort Lauderdale-Pompano Beach, FL	5.3	9.1	-4.3	-2.8	-1.8	4.7	-2.5	na	2.3	4.7	0.5	3.3
Michigan City-La Porte, IN	-0.1	0	0	-0.3	0	0	-0.1	-0.1	0.3	-0.1	na	0
Midland, TX	1.2	0.2	0	-0.1	0	0.1	0.1	0.5	0.2	0.1	0	0
Milwaukee-Waukesha-West Allis, WI	-4.7	0.9	-3.4	0.1	-0.3	2.2	2.3	na	-1	-3.1	-0.2	-0.2
Minneapolis-St. Paul-Bloomington, MN-WI	22.9	2.9	-0.3	0.7	0.4	10.4	6.5	-3.8	11.4	0.9	-2.6	-1.5
Missoula, MT	0.3	0.2	na	-0.4	na	-0.2	na	na	0.1	na	na	na
Mobile, AL	-1.7	0.2	-0.3	-0.7	0	0.3	-0.1	-0.5	-1	0.4	0	0
Modesto, CA	-0.1	-0.2	-0.2	-0.6	-0.2	-0.1	1.7	-0.4	0.1	-0.2	0.1	0.1
Monroe, LA	-0.9	0.2	na	-0.5	na	0.1	-0.3	na	-0.3	0.1	na	na

	Total Nonfarm	Health Services & Private Education	Financial Activities	Government	Information	Leisure & Hospitality	Manufacturing	Construction, Mining & Logging	Professional & Business Services	Retail Trade	Transportation & Utilities	Wholesale Trade
Monroe, MI	-0.8	-0.1	-0.1	-0.2	na	0	-0.2	0	-0.4	0	-0.1	0
Montgomery, AL	-1.9	0	-0.2	-1.4	-0.1	0.1	-0.1	-0.3	0.1	0.2	-0.1	-0.1
Morgantown, WV	0.1	0.4	na	-0.6	na	0.2	0.1	na	0.1	0	na	na
Morristown, TN	-0.3	-0.2	0	-0.3	0	0	-0.1	0	0.1	0.2	-0.1	0
Mount Vernon-Anacortes, WA	-1	na	na	-0.1	na	0.1	-0.1	0	0	0.3	na	na
Muncie, IN	0.1	0.1	0	-0.2	0	0.1	0	-0.1	0	-0.1	0	0
Muskegon-Norton Shores, MI	-0.4	0.3	0	0.2	0	-0.3	0	-0.1	-0.2	-0.3	na	na
Myrtle Beach-North Myrtle Beach-Conway, SC	3.5	na	na	0	na	1.2	na	na	0	-0.5	na	na
Napa, CA	-1.3	-0.1	-0.1	-0.2	0	-0.1	0.4	-1	0.4	-0.3	0	-0.2
Naples-Marco Island, FL	-0.1	0.1	-0.1	-0.3	0	0.2	-0.1	-0.3	-0.3	0.4	0	-0.1
Nashville-Davidson--Murfreesboro--Franklin, TN	-2.6	1.4	-1.1	-1.4	-0.7	-0.1	-1.9	-0.5	1.8	0.3	-0.3	0.1
New Bedford, MA NECTA	0	0.3	0	-0.2	-0.1	0.1	-0.1	0	0	0.2	na	na
New Haven, CT NECTA	0.2	0.5	0	-1	-0.4	0.8	-0.6	0.2	0.4	0.5	-0.1	-0.1
New Orleans-Metairie-Kenner, LA	4.5	1.9	-0.8	0.3	0.5	1.9	-0.9	na	0.6	0.9	0.4	0
New York-Northern New Jersey-Long Island, NY-NJ-PA	-8.7	25.6	3.3	-53	-3.5	12.1	-12.8	-4.2	21.4	-1.7	-2.6	-2.1
Niles-Benton Harbor, MI	-0.5	0.1	0	0.3	0	-0.1	-0.5	0	-0.2	0	na	na
North Port-Bradenton-Sarasota, FL	2	1.3	-0.3	-0.8	-0.1	0.5	-0.4	-0.5	1.3	0.3	0	0
Norwich-New London, CT-RI NECTA	-1.5	0.2	0.1	-1.4	-0.2	-0.1	-0.3	-0.2	0.1	0.5	0	-0.1
Ocala, FL	-0.9	0.6	-0.1	0.1	0	-0.1	-0.3	-0.7	0.2	-0.9	0	0.1
Ocean City, NJ	6.4	0.2	na	-0.7	na	-1.1	na	na	0	-0.2	na	na
Odessa, TX	1.1	0.1	0	0	0	0.2	0.1	0.5	0.1	0	0	0
Ogden-Clearfield, UT	-1.8	0.8	-0.5	0.7	0	-0.5	0.3	-1.5	0	-0.8	0	-0.2
Oklahoma City, OK	6.4	0.5	0.3	-0.8	-0.3	-0.7	-0.4	na	3.7	2.4	-0.3	-0.5
Olympia, WA	-0.7	na	na	-1.8	na	0.2	0	-0.2	0.3	0.5	na	na
Omaha-Council Bluffs, NE-IA	-0.9	1.6	-0.7	0.3	-0.8	0.9	-0.4	-3.2	1.3	1.2	-0.5	-0.7
Orlando-Kissimmee-Sanford, FL	11.6	3.5	-1	0.3	-0.8	11.1	-0.1	na	-1.9	-1.4	0.4	-1
Oshkosh-Neenah, WI	0.7	0.3	0	-0.2	0	0.2	0.4	0	0.1	-0.1	0	0
Owensboro, KY	0.4	0.1	0	0.4	0	-0.1	0.1	-0.1	0.1	-0.1	0	0
Oxnard-Thousand Oaks-Ventura, CA	-0.3	0.5	-0.1	-0.1	-0.1	-0.3	0.2	na	0.7	-0.1	0.1	-0.2
Palm Bay-Melbourne-Titusville, FL	-2.5	0.7	-0.2	-0.4	-0.1	0.3	-0.7	-0.8	-0.8	-1.2	0	0.2
Palm Coast, FL	-0.4	0.2	-0.1	-0.3	0	0	0	-0.1	0	0	-0.1	0
Panama City-Lynn Haven-Panama City Beach, FL	0.6	0.2	-0.2	0.4	-0.1	0.1	-0.1	-0.2	0.2	0.2	0	-0.1
Parkersburg-Marietta-Vienna, WV-OH	1.2	0.1	na	0.2	na	na	-0.2	na	0	na	na	na
Pascagoula, MS	-1.8	na	na	-0.1	na	na	-0.8	-0.3	0	-0.1	na	na
Pensacola-Ferry Pass-Brent, FL	0.4	0.4	-0.1	0.2	-0.2	0.8	-0.2	-0.5	0.1	-0.1	-0.1	-0.1
Peoria, IL	-0.8	0.1	-0.2	-0.2	0	-0.3	0.5	0.2	-0.1	-1.2	0.1	0.2
Philadelphia-Camden-Wilmington, PA-NJ-DE-MD	-2.3	10.5	-1.5	-8.7	-0.8	3	-4.6	-5.3	2.1	0	-0.1	1.6
Phoenix-Mesa-Glendale, AZ	25.5	9.2	-2.2	-5	-1.2	-1	-1.1	na	11.5	9.3	2.2	1.6
Pine Bluff, AR	-0.7	na	na	-0.4	na	na	na	na	0	na	na	na
Pittsburgh, PA	7.8	3.9	-0.5	-0.5	-0.7	-2.2	-0.1	na	2.8	1.6	-0.2	-0.1
Pittsfield, MA NECTA	0	0	0	-0.1	0	0.4	0	-0.1	-0.1	na	na	na
Pocatello, ID	-0.6	0.2	0	-0.2	-0.1	-0.1	-0.1	-0.1	0	-0.2	0	0
Ponce, PR	0	0.3	0	0.3	0	0.2	0	-0.4	na	-1.8	-0.1	na
Port St. Lucie, FL	0.2	0.9	-0.1	0.2	-0.1	0.7	-0.1	-0.6	-0.1	-0.9	0	0
Portland-South Portland-Biddeford, ME NECTA	-0.3	0.5	0	-0.4	-0.1	-0.5	-0.3	-0.3	1.3	-0.6	0.2	-0.2
Portland-Vancouver-Hillsboro, OR-WA	-4.5	0.9	-0.9	-2.7	-0.3	-0.4	1	na	2.8	0.1	-0.9	-0.7
Portsmouth, NH-ME NECTA	0.6	0.2	-0.1	-0.1	0	0.1	0.1	0	0.3	0.1	-0.1	0

	Total Nonfarm	Health Services & Private Education	Financial Activities	Government	Information	Leisure & Hospitality	Manufacturing	Construction, Mining & Logging	Professional & Business Services	Retail Trade	Transportation & Utilities	Wholesale Trade
Poughkeepsie-Newburgh-Middletown, NY	-0.6	0.3	-0.1	-1.3	0	-0.1	-0.2	0.1	0.5	0.3	-0.2	0
Prescott, AZ	0.2	0.3	0	-0.5	0	0.1	0	-0.2	0	na	na	na
Providence-Fall River-Warwick, RI-MA NECTA	-6	-0.6	-0.1	-1	0	0	-1.2	na	-0.9	-1.1	0.2	0
Provo-Orem, UT	-0.8	0.9	-0.1	0	0.1	0	-0.7	-0.1	0	-0.9	0	-0.1
Pueblo, CO	0	0.2	-0.1	0	0	-0.2	-0.1	0	0	0.1	0.1	0
Punta Gorda, FL	-0.1	0.3	0	-0.2	-0.1	0	0	0	0	-0.1	0	-0.1
Racine, WI	-0.2	0.2	-0.1	-0.6	0	0	0.3	0	0.1	-0.1	0	0
Raleigh-Cary, NC	-1.8	-1.3	-0.2	-1.4	0.4	-0.6	-0.4	-1.4	4	0.2	-0.4	-0.4
Rapid City, SD	1.7	0.2	-0.2	0.3	0	0.7	0	-0.1	0.4	0	0.2	0.1
Reading, PA	0.9	0.7	-0.3	-0.3	0	0.1	-0.3	0.3	0.2	0.1	0.3	0.1
Redding, CA	-0.6	0.1	0	-0.3	-0.1	-0.1	0.1	0	0	-0.3	0	0
Reno-Sparks, NV	-5.4	0.6	-0.3	-0.6	-0.1	-1.3	-0.2	na	-0.6	-0.1	-0.2	0
Richmond, VA	-0.4	0.2	-0.2	-0.3	-0.4	-1.6	-1.2	0.6	2.7	-0.9	-0.1	0.3
Riverside-San Bernardino-Ontario, CA	-9.4	0.4	-0.9	-5	-0.4	1.5	-1.8	na	1.7	-0.7	1.4	-0.1
Roanoke, VA	-0.1	0.5	0	-0.1	-0.1	0.3	-0.1	-0.2	0.2	-0.9	0.2	0
Rochester, MN	1.6	1	0	0.2	0.1	0.2	0.3	-0.2	0	0.1	0	0
Rochester, NY	2.1	2.3	-0.4	-1.3	-0.3	1.8	-1.5	na	1.5	-0.1	-0.1	-0.1
Rochester-Dover, NH-ME NECTA	0.7	0.3	0	-0.1	0	0	0	0.1	0.3	0	-0.1	0.1
Rockford, IL	1.2	0.3	-0.1	0.4	0.1	0	0.3	0	0.2	-0.2	0.3	0.2
Rocky Mount, NC	-0.3	0.1	na	-0.5	na	0	-0.1	-0.1	0.2	-0.3	na	na
Rome, GA	-0.3	0.2	na	0	na	na	0	na	na	0	na	na
Sacramento--Arden-Arcade--Roseville, CA	-21.5	-0.9	-3.1	-2.2	-1.4	-2.2	-0.4	na	-3.6	-1.6	0.1	-0.9
Saginaw-Saginaw Township North, MI	-0.4	0.2	0	-0.2	-0.1	-0.2	0.1	-0.1	0	-0.1	-0.1	0.1
Salem, OR	-2.7	0.2	-0.1	-0.2	-0.1	-0.3	-0.6	na	-0.1	-0.6	-0.1	-0.1
Salinas, CA	-1.4	0.1	-0.1	-0.7	-0.1	-0.1	-0.6	na	0.2	0.1	-0.1	0.2
Salisbury, MD	0.1	na	na	0	na	na	na	na	na	na	na	na
Salt Lake City, UT	-5.9	2.1	-0.9	0.9	-0.6	-0.2	-2.9	-1.4	-0.5	-0.9	-0.5	-0.8
San Angelo, TX	0.6	0.2	0	0.1	-0.1	0.1	0.1	0.1	0.1	0.1	0	-0.1
San Antonio-New Braunfels, TX	6.3	1.2	0.8	1.8	-1	0.2	-0.3	na	2.4	1.4	0	-0.2
San Diego-Carlsbad-San Marcos, CA	0.1	3.1	-0.2	-1.5	-0.8	-1.8	-1.9	na	3.5	0.5	0	0.9
San Francisco-Oakland-Fremont, CA	-32.2	-0.2	-4.3	-6.6	-2.6	-0.9	-3.6	na	-0.5	-3.5	-0.9	-0.3
San German-Cabo Rijo, PR	-1.3	na	na	-0.6	na	na	0	na	na	-0.2	na	na
San Jose-Sunnyvale-Santa Clara, CA	5.6	0.4	-0.5	-4.2	1	1.8	3.9	na	3.9	-0.4	0.3	0.8
San Juan-Caguas-Guaynabo, PR	-16.1	1.7	0.3	-9	0.1	-0.5	-1.5	-6.2	6.9	-7	0.6	-1.6
San Luis Obispo-Paso Robles, CA	-0.8	0	0	-1.2	0	0	0.1	-0.5	0.3	0	-0.2	0.2
Sandusky, OH	1	0.2	na	0.1	na	-0.1	0.1	-0.1	0.1	0	na	0
Santa Barbara-Santa Maria-Goleta, CA	-0.3	0.1	0.1	-0.1	-0.1	-0.2	0.3	na	0.2	-0.3	0	0
Santa Cruz-Watsonville, CA	-2.6	0	0	-0.4	0	-0.5	-0.1	-0.5	-0.3	-0.4	-0.2	-0.2
Santa Fe, NM	-0.4	0	-0.1	0.1	0.1	-0.1	0	-0.1	-0.4	0	0	-0.1
Santa Rosa-Petaluma, CA	-0.5	0.9	-0.1	-0.8	-0.2	0.2	0	na	0.3	-0.1	0.1	-0.2
Savannah, GA	1.8	0.6	-0.2	0.1	0	0.2	-0.1	-0.4	0.6	0.8	0	0
Scranton--Wilkes-Barre, PA	0.4	1.2	-0.3	-0.1	0.1	0.9	-1	-0.2	-1	0.6	0.4	0
Seattle-Tacoma-Bellevue, WA	12	6.1	-4	-0.8	3.1	1.8	1.7	na	5.3	3.9	-0.8	1.4
Sebastian-Vero Beach, FL	-0.2	0.1	0	-0.3	0	0.3	0	-0.1	-0.1	0	0	-0.1
Sheboygan, WI	0.8	0.1	0	0.1	0	0	0.5	0	0.1	0	0	0
Sherman-Denison, TX	0.9	0.2	0.1	0.1	0	0.1	0.1	0.1	0.1	0.1	0	0
Shreveport-Bossier City, LA	1.2	0.5	-0.1	-0.1	0.3	0.3	-0.2	na	-0.1	0.3	0.2	0

	Total Nonfarm	Health Services & Private Education	Financial Activities	Government	Information	Leisure & Hospitality	Manufacturing	Construction, Mining & Logging	Professional & Business Services	Retail Trade	Transportation & Utilities	Wholesale Trade
Sioux City, IA-NE-SD	-0.9	na	na	-0.2	na	-0.3	-1.2	na	0.2	-0.1	na	na
Sioux Falls, SD	0.4	0.7	-1.1	0	0.1	0	0.2	-0.3	0.7	-0.2	0.1	0.3
South Bend-Mishawaka, IN-MI	-1.6	-1.5	-0.3	-0.1	0	0	-0.1	-0.3	0.6	-0.1	0	0.4
Spartanburg, SC	0.9	na	na	-0.2	na	na	-0.1	na	na	-0.2	na	na
Spokane, WA	-1.5	0.3	-0.1	-0.1	0.1	-0.5	-0.2	-0.1	-0.5	0.2	-0.1	-0.4
Springfield, IL	-0.6	0	0	-0.1	0	0.1	-0.1	-0.4	0.1	-0.1	0	0
Springfield, MA-CT NECTA	-7.2	0.9	-0.3	-0.4	0	-1.3	-2.2	-0.5	-0.8	-1.4	-0.4	-0.6
Springfield, MO	2.7	1.4	-0.2	1.3	-0.1	-0.4	-0.1	0.2	0.5	0.1	-0.1	0.1
Springfield, OH	-0.6	-0.2	-0.1	0.6	na	-0.1	0.1	0	-0.2	-0.4	-0.1	0
St. Cloud, MN	-0.1	0.1	0.1	-0.3	0.1	0	-0.2	-0.1	0	0.2	0	0
St. George, UT	-1.5	0.3	-0.2	0.2	-0.1	-0.4	-0.1	-0.7	0	-0.3	-0.2	0
St. Joseph, MO-KS	2.3	na	na	1.3	na	na	na	na	na	na	na	na
St. Louis, MO-IL	2.9	4.8	-0.8	0.5	-0.3	1	0.4	-1.7	-1.2	-1.7	1.7	0.1
State College, PA	-0.4	-0.1	na	-0.5	na	-0.1	0.1	na	0	0.2	na	na
Steubenville-Weirton, OH-WV	0.6	0	na	-0.1	na	0.1	0.1	-0.1	0.3	0.1	0	na
Stockton, CA	-3.6	0.6	-0.8	-3.5	0	0.1	0.7	na	0.1	0.2	-0.3	0
Sumter, SC	-0.5	na	na	0	na	na	0	na	na	na	na	na
Syracuse, NY	0.8	1.6	-0.1	-1.7	-0.1	0	-0.1	0.4	0.7	0.8	-0.1	-0.9
Tallahassee, FL	0.5	0.6	-0.1	-0.1	0	0.1	0	-0.3	0.1	-0.5	0	0
Tampa-St. Petersburg-Clearwater, FL	1.5	1.9	0.8	2.4	-1.3	1.5	-3.2	na	4.9	0.1	-0.3	-2.2
Terre Haute, IN	-0.1	0.2	0	-0.9	0	0.2	0.1	-0.1	0.5	-0.2	0.1	0.1
Texarkana, TX-Texarkana, AR	1.2	0.2	0	0.3	0	0.1	0.1	0.1	0.1	0.1	0.1	0
Toledo, OH	-1.9	0.5	-0.4	-1.2	-0.1	0	0.5	-0.4	-0.4	0.6	-0.2	-0.4
Topeka, KS	0.7	0.1	0	-0.1	-0.1	0.1	0.1	0.1	0.1	0.2	0.2	0
Trenton-Ewing, NJ	-2.7	-0.5	0.2	-2.7	0.1	0	-0.2	-0.1	0.8	-0.1	0	-0.1
Tucson, AZ	0.2	2.4	-0.2	0	-0.1	-0.4	-0.7	na	0.2	0.5	0	-0.1
Tulsa, OK	0.5	1.6	0.3	-2.5	-0.5	-0.4	0.7	na	0.8	0.7	-0.9	-0.3
Tuscaloosa, AL	0.4	0.1	0	0.4	0	0.1	-0.2	-0.1	0	0.1	0	0
Tyler, TX	1.2	0.7	0	-0.1	-0.1	0.2	-0.1	0.2	0.3	-0.1	0	0
Utica-Rome, NY	-0.5	0.5	-0.1	-0.3	-0.1	0	0.1	-0.3	0.1	-0.2	-0.2	0
Valdosta, GA	-0.2	na	na	-0.2	na	na	na	na	na	0	na	na
Vallejo-Fairfield, CA	-2.1	-0.1	-0.2	-0.2	-0.1	-0.1	-0.3	na	0	-0.1	-0.2	-0.1
Victoria, TX	0.8	0.2	-0.1	0	0	0	0.2	0.3	0.1	0	0	0
Vineland-Millville-Bridgeton, NJ	-0.7	0.3	0.1	-0.9	0	0	-0.3	0	0.1	0	na	-0.1
Virginia Beach-Norfolk-Newport News, VA-NC	7.8	0.6	-0.6	-1.2	-0.4	2.8	-1.8	0	4.7	3.2	0.3	-0.4
Visalia-Porterville, CA	-1.3	0.1	0	-0.7	0	0	0.3	-0.7	-0.1	-0.2	0.1	-0.1
Waco, TX	2.1	0.5	0	0.7	0	0.2	0.1	0.3	0.2	0	0	0
Warner Robins, GA	-0.3	na	na	0.6	na	na	na	na	na	0	na	na
Washington-Arlington-Alexandria, DC-VA-MD-WV	49.2	12	-3.2	10.9	-2.6	10.2	-2.9	-4.5	18.5	13.4	1.5	0
Waterbury, CT NECTA	0.4	0.2	0	0	0	0.2	-0.3	0.1	-0.1	0.3	0	0
Waterloo-Cedar Falls, IA	1	0.1	0	0.5	na	0	0.2	na	0	-0.2	na	na
Wausau, WI	0.6	0.1	0	0	0	0.2	0.4	0	0	-0.1	-0.1	0
Wenatchee-East Wenatchee, WA	0.5	0.2	na	-0.2	na	0.1	0	-0.1	na	0.3	na	na
Wheeling, WV-OH	1.2	0.3	na	-0.1	na	na	0	na	na	na	na	na
Wichita Falls, TX	0.7	0.2	0	-0.3	-0.1	0.1	0	0.2	0.5	0	0	0
Wichita, KS	-1.2	0.6	-0.1	-1.2	-0.4	0.1	0.4	-1	0.1	-0.6	0.3	0.2
Williamsport, PA	0.6	0.1	na	0.1	na	0.1	0.1	na	na	0	na	na

	Total Nonfarm	Health Services & Private Education	Financial Activities	Government	Information	Leisure & Hospitality	Manufacturing	Construction, Mining & Logging	Professional & Business Services	Retail Trade	Transportation & Utilities	Wholesale Trade
Wilmington, NC	-2	0.5	0	-0.5	0	-1	0	-0.5	-0.4	0.1	-0.2	0.1
Winchester, VA-WV	-0.6	na	na	0.3	na	na	na	na	na	na	na	na
Winston-Salem, NC	-1.5	1	-0.1	-2.3	0	0.3	-0.6	-0.5	1.6	-0.4	-0.4	-0.1
Worcester, MA-CT NECTA	-3	1.1	-0.1	-0.1	-0.1	-0.2	-1.4	-0.2	-1.5	-0.1	-0.1	-0.1
Yakima, WA	1.2	0.2	na	-0.4	na	0.2	-0.1	0.1	0.1	0.4	-0.1	-0.5
Yauco, PR	-0.6	na	na	-0.4	na	na	na	na	na	0	na	na
York-Hanover, PA	2	0.5	-0.1	0	0	0.1	0.2	0.1	0.5	0.3	0.1	0.1
Youngstown-Warren-Boardman, OH-PA	0.7	0.2	-0.4	-0.1	-0.1	0	5	-0.2	-0.9	-2.4	0	-0.1
Yuba City, CA	-1.4	-0.4	0	-0.6	-0.1	0	0	-0.1	0	-0.2	0	0
Yuma, AZ	-0.3	0.1	0	0.6	-0.3	-0.1	0.1	-0.1	-0.1	na	na	na

Garner Economics, LLC provides innovative economic development solutions in a competitive global market. Garner Economics offers site selection, analytical research, industry targeting, strategic planning and organizational development with a wealth of expertise to companies, communities, and organizations globally. Garner Economics is based in Atlanta, GA and has representative offices in both Europe and Asia.

Since 2003, our team has been headed by Jay Garner, a 30+ year veteran of the management consulting, economic development and chamber of commerce professions and rounded out by talented experts with CEcD, CCE and CFRE designations.

Garner Economics LLC

715 Birkdale Drive | Atlanta, GA 30215
770-716-9544 | 770-719-8911 (f)
www.garnereconomics.com